

TOWEL DRYER

(EN) INSTALLATION INSTRUCTIONS

SAFETY INSTRUCTIONS

Observe all basic safety regulations when using electrical equipment!

PLEASE READ THESE INSTRUCTIONS CAREFULLY:

This unit is designed to heat and dry towels and is therefore warm to the touch. The towel rail must not be used by children or unauthorized persons without supervision and may not be used either near them. Young children should be supervised to ensure that it was ensured that they would not play with the unit.

- An increase in ambient temperature is equivalently reflected on the unit and therefore the unit is warmer in the warmer period. Insulating effect towels also causes a slight increase in operating temperature.

- The unit must be installed in such a way that all contacts and other controls were out of reach during the bath or showering

- The unit must not be used for purposes other than those for which is intended.

To avoid danger, the towel dryer **MUST NOT** be used to dry towels or other items that have come into contact salt, oil products or cleaning agents.

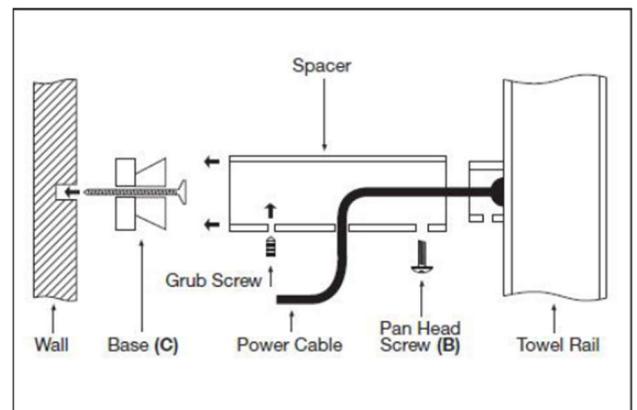
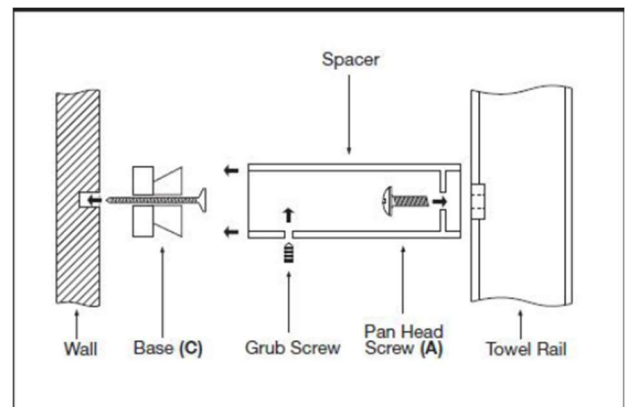
- This unit may only be used at 230V / 50Hz

- Legal regulations require electrical work to be performed by a qualified professional. With regard to your safety and security of your surroundings ensure that this will be the case respected.

- The unit **MUST NOT** be immersed in any type of liquid.

- If you need service, please contact your the nearest authorized dealer

- If the power cord is damaged, it must be replaced by the manufacturer, dealer or other qualified person professional to avoid danger.



INSTALLATION

Towel dryer installation:

We recommend that a towel dryer be installed by a qualified person professional. Read the safety regulations carefully. They contain important information to install. Choose a place to install and make sure you have a towel dryer will be placed in the bathroom with regard to its electrical cover IP34. The towel rail should be installed at a minimum 600 mm above the ground.

Install the towel rail using the holders with one lock screw (see the picture).

The unit **MUST** be installed according to the applicable electrical standards and provisions, in particular in accordance with the provisions relating to with the installation of the units and their accessories in a humid environment such as in bathrooms, showers and cabins, in laundries and other areas where it is permanently installed tray drain.

Furthermore, the towel dryer must be installed in accordance with the applicable ones European standards (EN / CE).

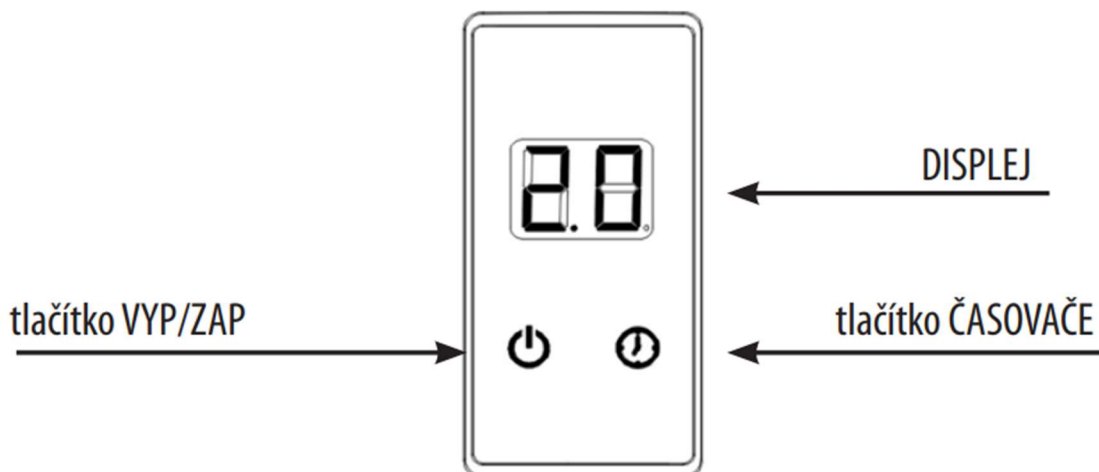
Electrical products must not be disposed of with the household waste. If possible, please send the product for recycling. Consult your dealer or follow the instructions for recycling options regulations of your municipality.

MAINTENANCE:

The towel dryer is best cleaned with a damp cloth. **AVOID USING CLEANERS WITH CONTENTS SAND AND SOLVENTS.**



Instructions for use:



tlačítko VYP/ZAP ----- switch OFF/ON

DISPLEJ ----- DISPLAY

tlačítko ČASOVAČE ----- TIMER SWITCH

This device has a timer function with three operating modes:

1. Continuous operation

A. Press the OFF / ON button once, -- will appear on the display. The dryer starts in standby mode (so-called STANDBY).

B. Press the OFF / ON button again, appears on the display and the LED in the lower left corner starts flashing. This will put the dryer into operation.

C. Whenever you press the OFF / ON button during operation, the timer will turn off and the dryer will stop heating.

2. Time-limited operation

A. Press the OFF / ON button once, -- will appear on the display. The dryer starts in standby mode (so-called STANDBY).

B. Press the timer button ON to set the operating time. Press the button repeatedly to set the time in the range 1 - 12 hours (see display).

C. Press the OFF / ON button again to confirm, 1 0 will appear on the display and start in the upper left corner flashing diode. The dryer will now be in operation, it will switch off automatically after the set time has elapsed. During operation, you can change the warm-up time by holding down the timer button for 3 seconds. The display flashes once, now you can reset the time - do not perform any action for 3 seconds to confirm the selected value. The display flashes twice and the dryer starts operation. It will turn off automatically after the set time has elapsed.

D. Whenever you press the OFF / ON button during operation, the timer will turn off and the dryer will stop heating.

3. Time-adjustable operation

A. Press the OFF / ON button once, - will appear on the display. The dryer starts in standby mode (so-called STANDBY).

B. Press the timer button to set the operating time. Press the button repeatedly to set the time in the range 1 - 12 hours (see display).

C. Hold down the OFF / ON button for 3 seconds to confirm, the display will flash twice, 1 0 will appear on it and in the left the LED in the upper corner starts flashing. The dryer will now be in operation, it will switch off automatically after the set time has elapsed.

D. After the required time has elapsed, the dryer switches to sleep mode - appears on the display - and starts flashing intermittently. The dryer switches on automatically at the same time every day, at the same time. Eg: at 7 o'clock in the morning you set the dryer to heat after for 1 hour, the dryer always switches on at 7 am for 1 hour and then switches off automatically.

E. Whenever you press the OFF / ON button while the machine is operating, it will turn off the operation and put the dryer in sleep mode. Press repeatedly to cancel the timer setting (press once to put the device in standby mode mode, press twice to cancel the timer setting).